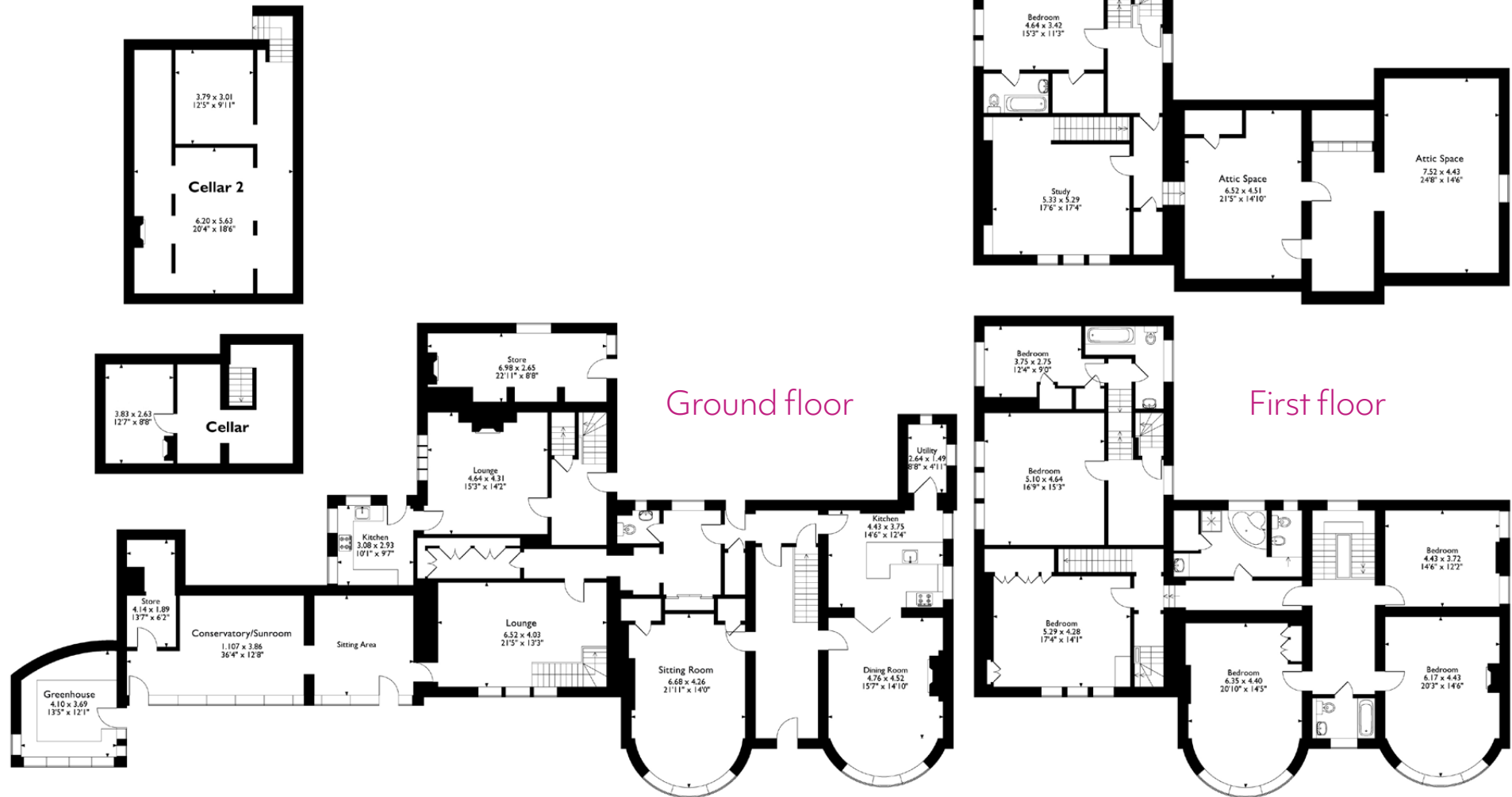


# Floor plans



Charnock Bates



Total approximate floor area:

Main House: 4,789.94 sqft (444m<sup>2</sup>)

Cottage: 1,517.71 sqft (140m<sup>2</sup>)

**Total: 6,307.65 sqft (585m<sup>2</sup>)**

Please note: All measurements are approximate and for general guidance only and whilst every attempt has been made to ensure accuracy, they must not be relied on. Internal photographs are reproduced for general information and it must not be inferred that any item shown is included with the property.